



UBDA Platform

User Guide

Version 1.0

16 July 2018

Revision History

Version	Date	Prepared By	Summary of Changes
1.0	Jul 16, 2018		Initial release

Table of Contents

1. Introduction	4
2. Login via PuTTY SSH	5
3. Upload file via WinSCP	6

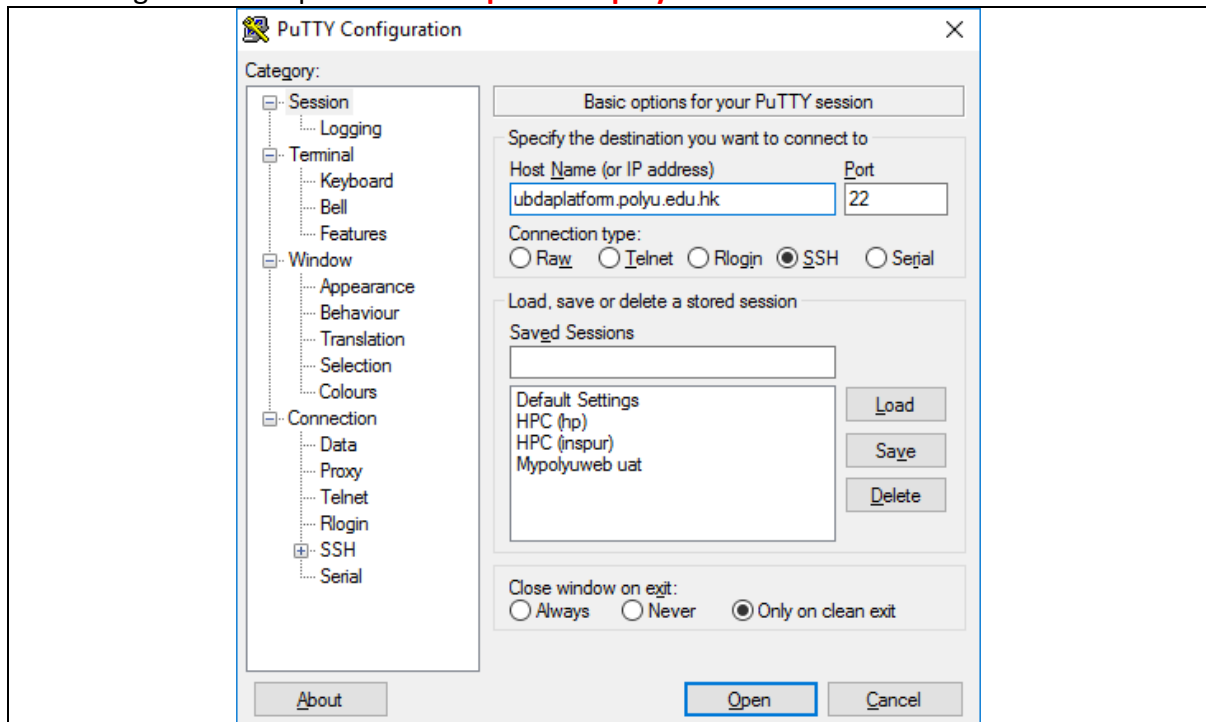
1. Introduction

This document is shown a user guide of the UBDA platform.

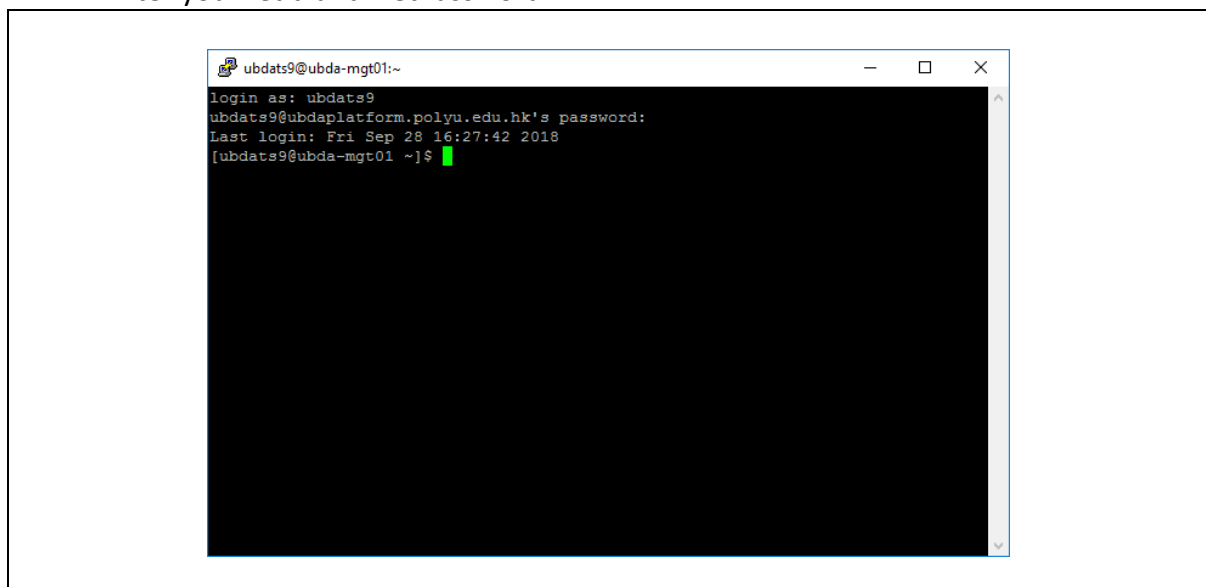
*Note: User should first register a user account through UBDA website at:
<https://www.polyu.edu.hk/pfs/index.php/177729> to access the UBDA Platform*

2. Login via PuTTY SSH

2.1 Login to UBDA platform ubdaplatform.polyu.edu.hk via PuTTY

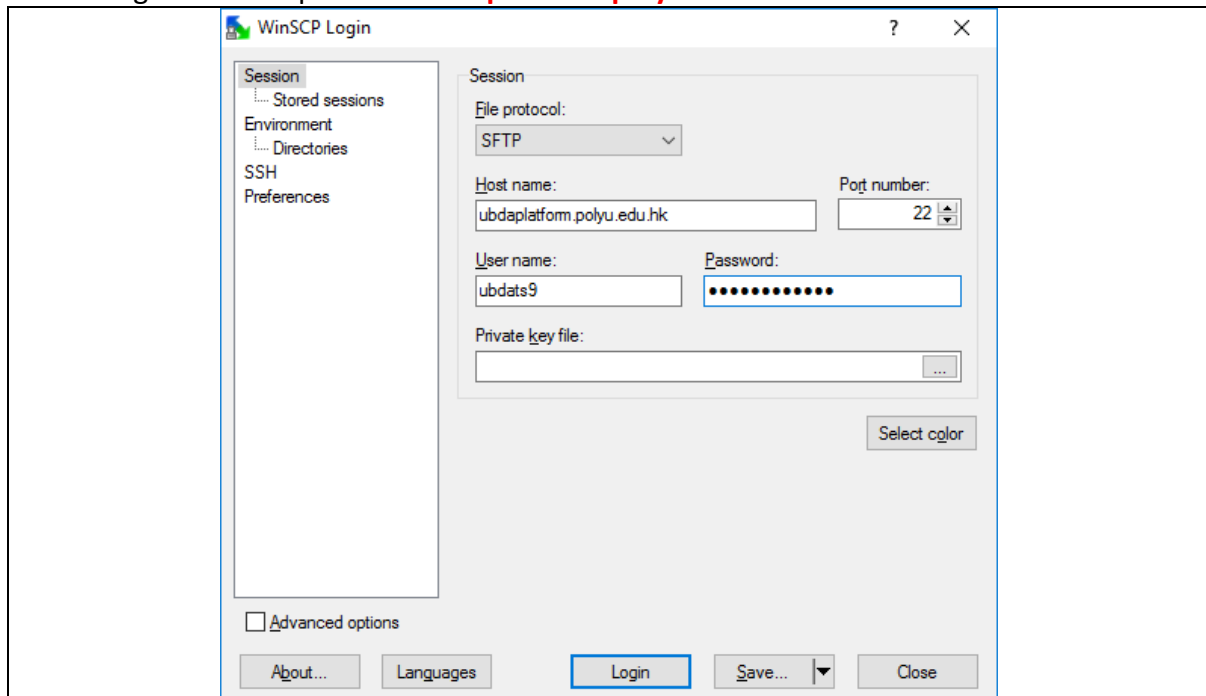


2.2 Enter you Netid and NetPassword

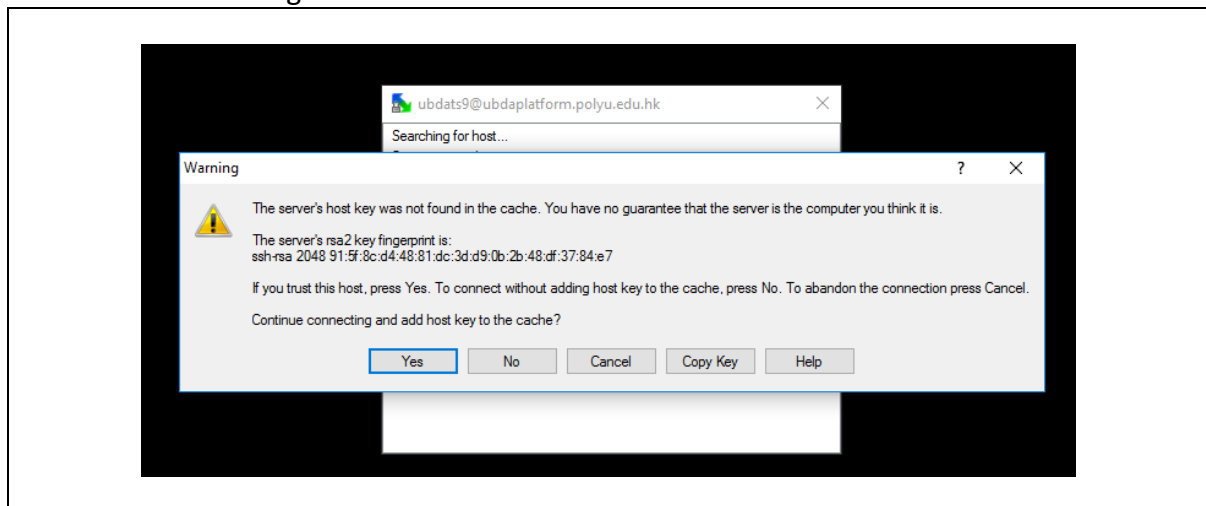


3 Upload file via WinSCP

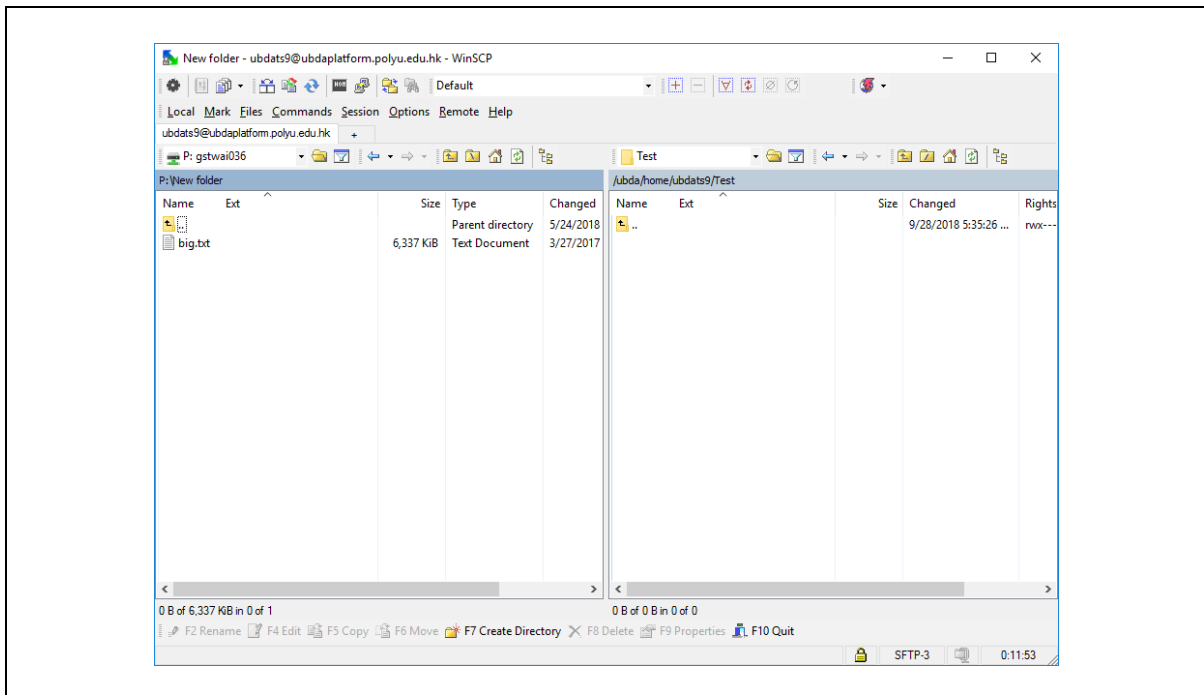
3.1 Login to UBDA platform **ubdaplatform.polyu.edu.hk** via WinSCP



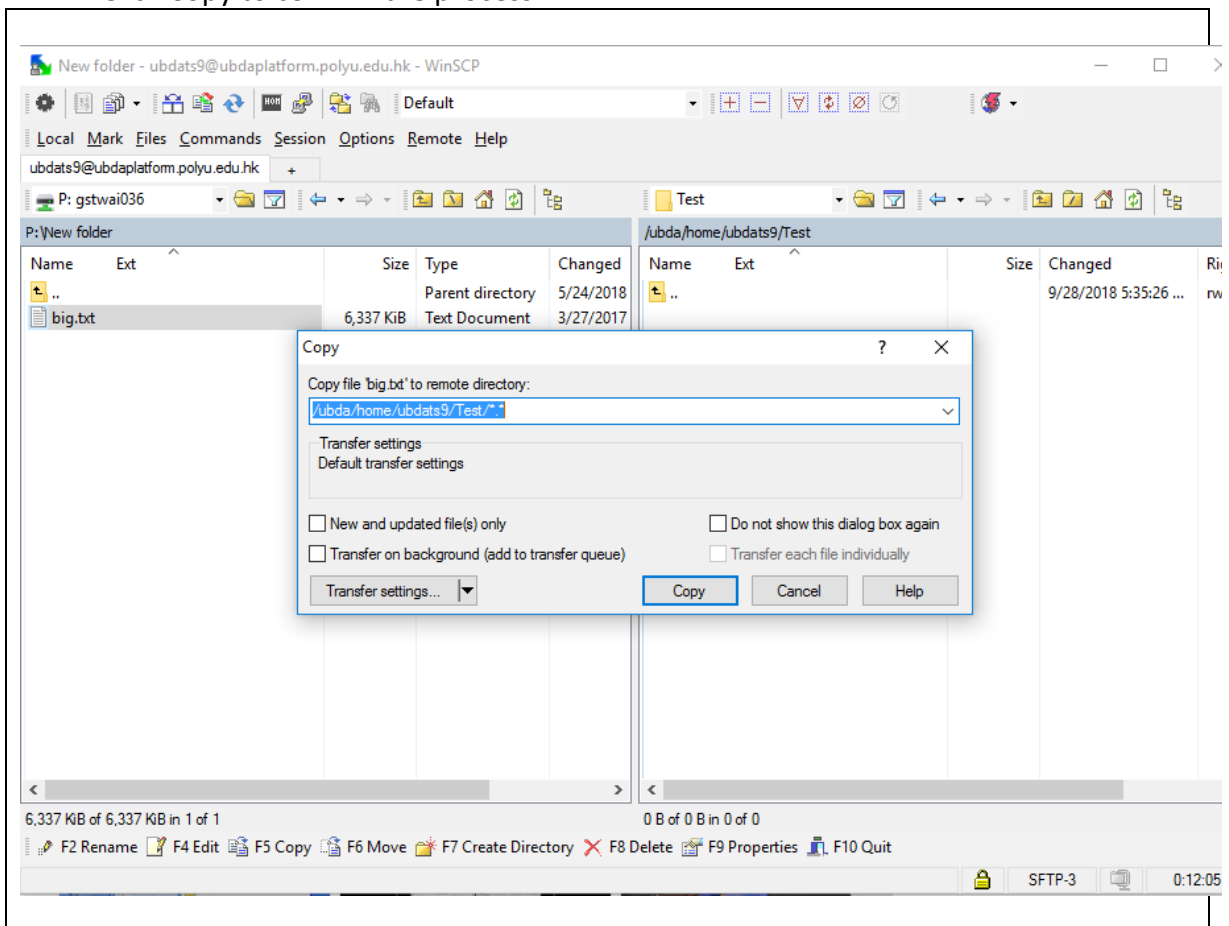
3.2 Click Yes to Login



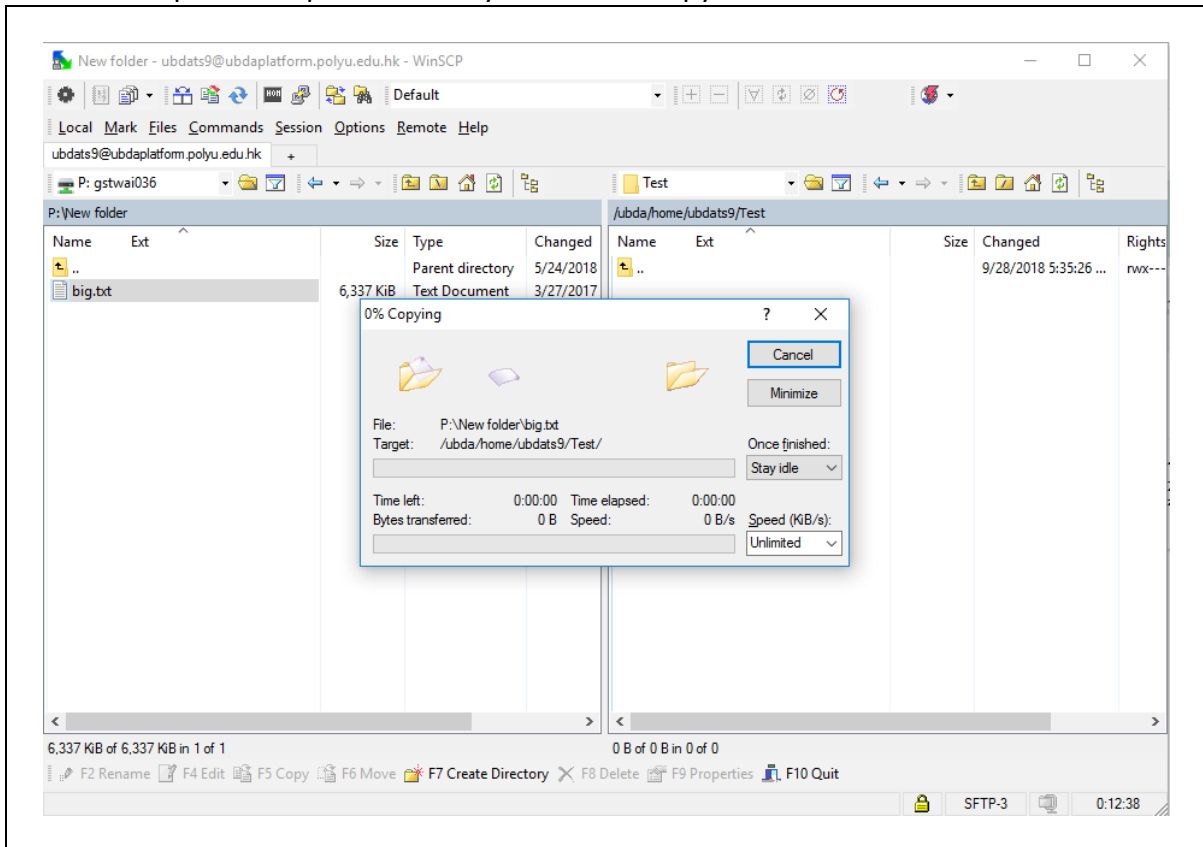
- 3.3 Left side is the folder and file that you want to upload. Right side can select target location.



- 3.4 Drop and drag the file/folder from the left side to right side to process the upload. Click Copy to confirm the process.



3.5 The upload will process after you click the copy button.



3.6 The upload completed as below

